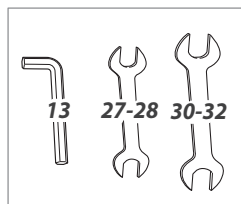
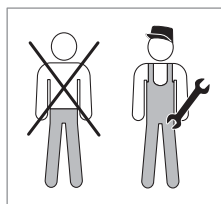
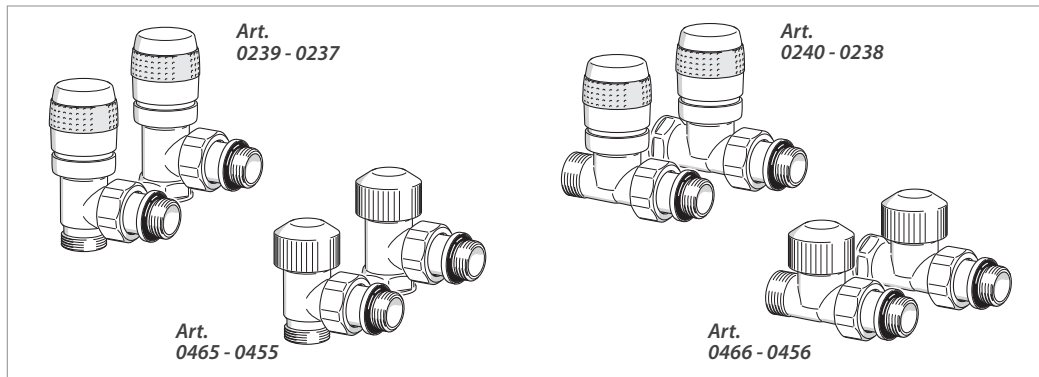




IR



Serie Planet - Termostattizzabili e termostatiche - Thermostatizable and thermostatic



<p>Art. 0481</p> <ul style="list-style-type: none"> ∅ 10 ∅ 12 ∅ 14 ∅ 15 ∅ 16 ∅ 18 	<p>Art. 0483</p> <ul style="list-style-type: none"> ∅ 7.5/8-12 ∅ 9.5/10-14 ∅ 9.5/10-15 ∅ 10.5/11-15 ∅ 10.5/11-16 ∅ 11.5/12-16 ∅ 12.5/13-17 ∅ 12.5/13-18 ∅ 13.5/14-18 ∅ 14.5/15-20 ∅ 15/15.5-20 ∅ 15.5/16-20 	<p>Art. 0490</p> <p>3/8" 1/2"</p> <ul style="list-style-type: none"> ∅ 10 ∅ 12 ∅ 14 ∅ 15 ∅ 16 ∅ 18 	<p>Art. 0491</p>	<p>Art. 0093</p>
--	--	---	-------------------------	-------------------------



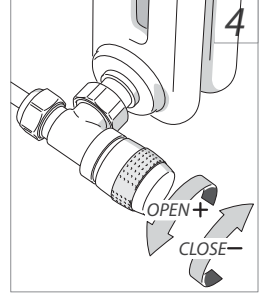
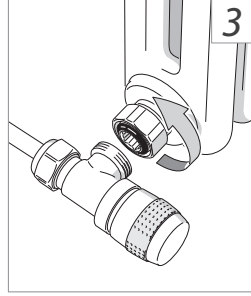
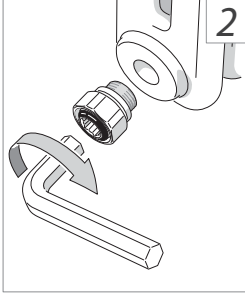
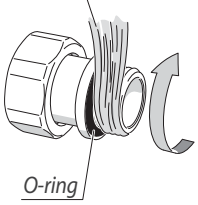
<p>Art. 0481</p> <p>90°</p> <p>R0.2/0.5</p>	<p>1</p> <p>35÷45 Nm</p> <p>2</p>
<p>Art. 0483</p> <p>90°</p>	<p>1</p> <p>40÷60 Nm</p> <p>2</p>



2 - 130°C (36-266°F)
Max 10 bar (145 psi)



Canapa - PTFE (Teflon) **1**
Hemp - PTFE (Teflon)



Art. 0093

